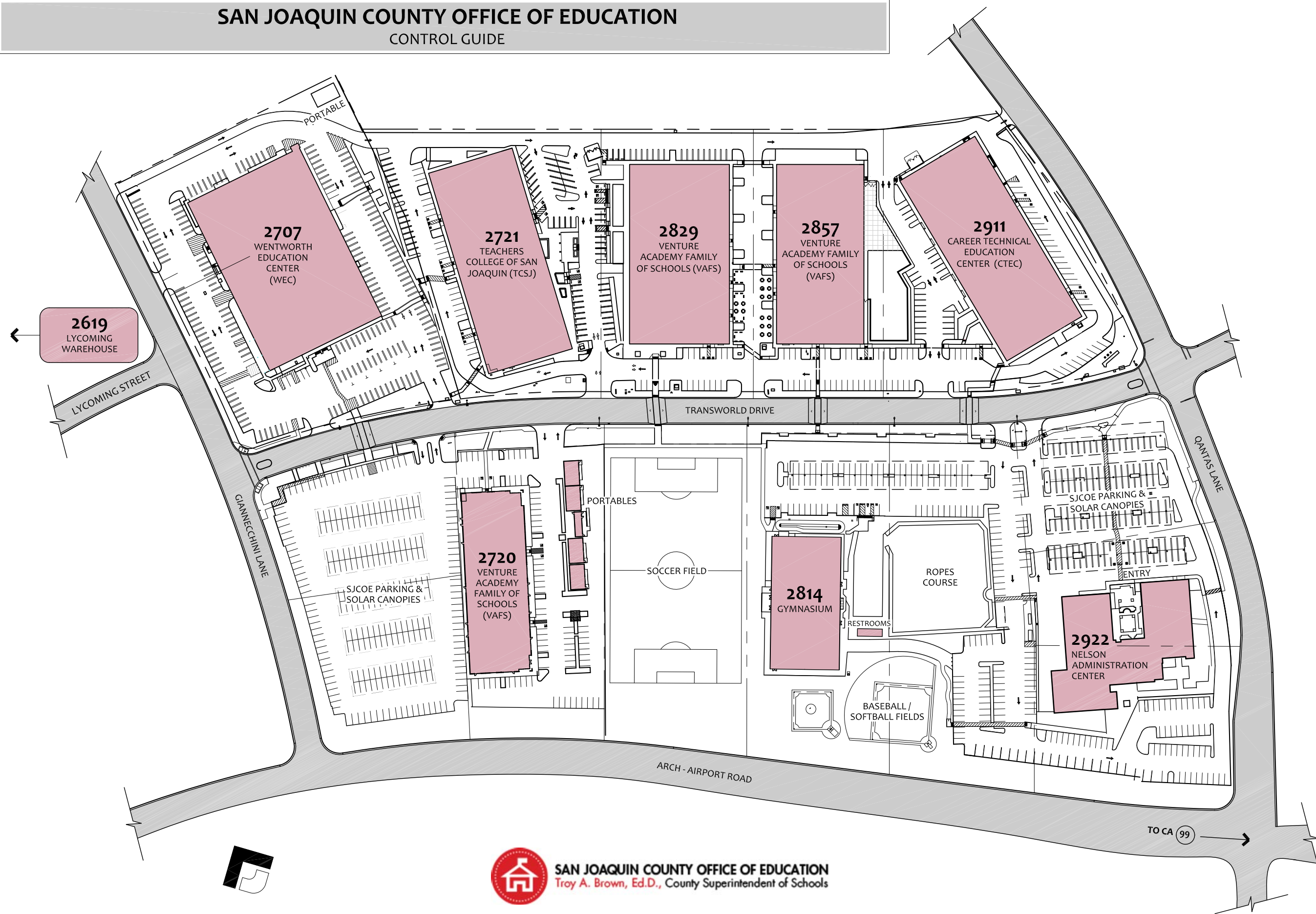


SAN JOAQUIN COUNTY OFFICE OF EDUCATION CONTROL GUIDE



243 N. MAPLE AVENUE, STE B
POST OFFICE BOX 477
MANTECA, CALIFORNIA 95336
P: 209.239.1229 / F: 209.239.4880

FILENAME: S.J.C.O.E._ControlGuide_01_CampusPlan
LAST UPDATE: 23 DEC 23
DRAWN: MDL / JMS / MM



CAMPUS PLAN
SAN JOAQUIN COUNTY OFFICE OF EDUCATION
TRANSWORLD DRIVE
STOCKTON, CALIFORNIA

BUILDING CONTROL GUIDE

SCALE: 1" = 150'-0"
DATE: 12 FEB 24

CAM

PAGE: 01 of 17





CAMPUS LOCATION

VICINITY MAP



SHEET INDEX

PAGE NO.	SHEET NO.	TITLE
1	CAM	CAMPUS PLAN
2	IDX	SHEET INDEX & VICINITY MAP
3	2922_1	NELSON EDUCATION CENTER - FIRST FLOOR
4	2922_2	NELSON EDUCATION CENTER - SECOND FLOOR
5	2911_1	CAREER TECHNICAL EDUCATION CENTER - FIRST FLOOR
6	2911_2	CAREER TECHNICAL EDUCATION CENTER - SECOND FLOOR
7	2857	VENTURE ACADEMY FAMILY OF SCHOOLS
8	2829	VENTURE ACADEMY FAMILY OF SCHOOLS
9	2721_1	TEACHERS COLLEGE OF SAN JOAQUIN - FIRST FLOOR
10	2721_2	TEACHERS COLLEGE OF SAN JOAQUIN - SECOND FLOOR
11	2707_1	WENTWORTH EDUCATION CENTER - FIRST FLOOR
12	2707_2	WENTWORTH EDUCATION CENTER - SECOND FLOOR
13	2720	VENTURE ACADEMY FAMILY OF SCHOOLS
14	2720_P	VENTURE ACADEMY FAMILY OF SCHOOLS PORTABLES
15	2814	GYMNASIUM
16	2814_P	VENTURE ACADEMY FAMILY OF SCHOOLS PORTABLES
17	LYC	LYCOMING WAREHOUSE



243 N. MAPLE AVENUE, STE B
 POST OFFICE BOX 477
 MANTECA, CALIFORNIA 95336
 P: 209.239.1229 / F: 209.239.4880

SHEET INDEX
 SAN JOAQUIN COUNTY OFFICE OF EDUCATION
 TRANSWORLD DRIVE
 STOCKTON, CALIFORNIA

BUILDING CONTROL GUIDE

SCALE: NO SCALE

DATE: 12 FEB 24

IDX

PAGE: 02 of 17





LEGEND			
DEPARTMENT	USABLE AREA	ADD-ON FACTOR	NET AREA
BUSINESS	9,799 SF	17.562%	11,520 SF
CONFERENCE ROOMS	2,567 SF	17.562%	3,018 SF
INFORMATION TECHNOLOGY	8,503 SF	17.562%	9,996 SF
PAYROLL	3,040 SF	17.562%	3,574 SF
COMMON AREAS	5,211 SF	N/A	N/A
TOTAL	29,120 SF		28,108 SF

NELSON EDUCATION CENTER
FIRST FLOOR



243 N. MAPLE AVENUE, STE B
 POST OFFICE BOX 477
 MANTECA, CALIFORNIA 95336
 P: 209.239.1229 / F: 209.239.4880

NELSON EDUCATION CENTER
 SAN JOAQUIN COUNTY OFFICE OF EDUCATION
 2922 TRANSWORLD DRIVE
 STOCKTON, CALIFORNIA

BUILDING CONTROL GUIDE

SCALE: 1" = 25'-0"
 DATE: 12 FEB 24

2922_1



LEGEND			
DEPARTMENT	USABLE AREA	ADD-ON FACTOR	NET AREA
ADMINISTRATION	6,306 SF	21.605%	7,668 SF
HUMAN RESOURCES	5,141 SF	21.605%	6,252 SF
COMMON AREAS	1,461 SF	N/A	N/A
TOTAL	12,908 SF		13,920 SF

NELSON EDUCATION CENTER

SECOND FLOOR



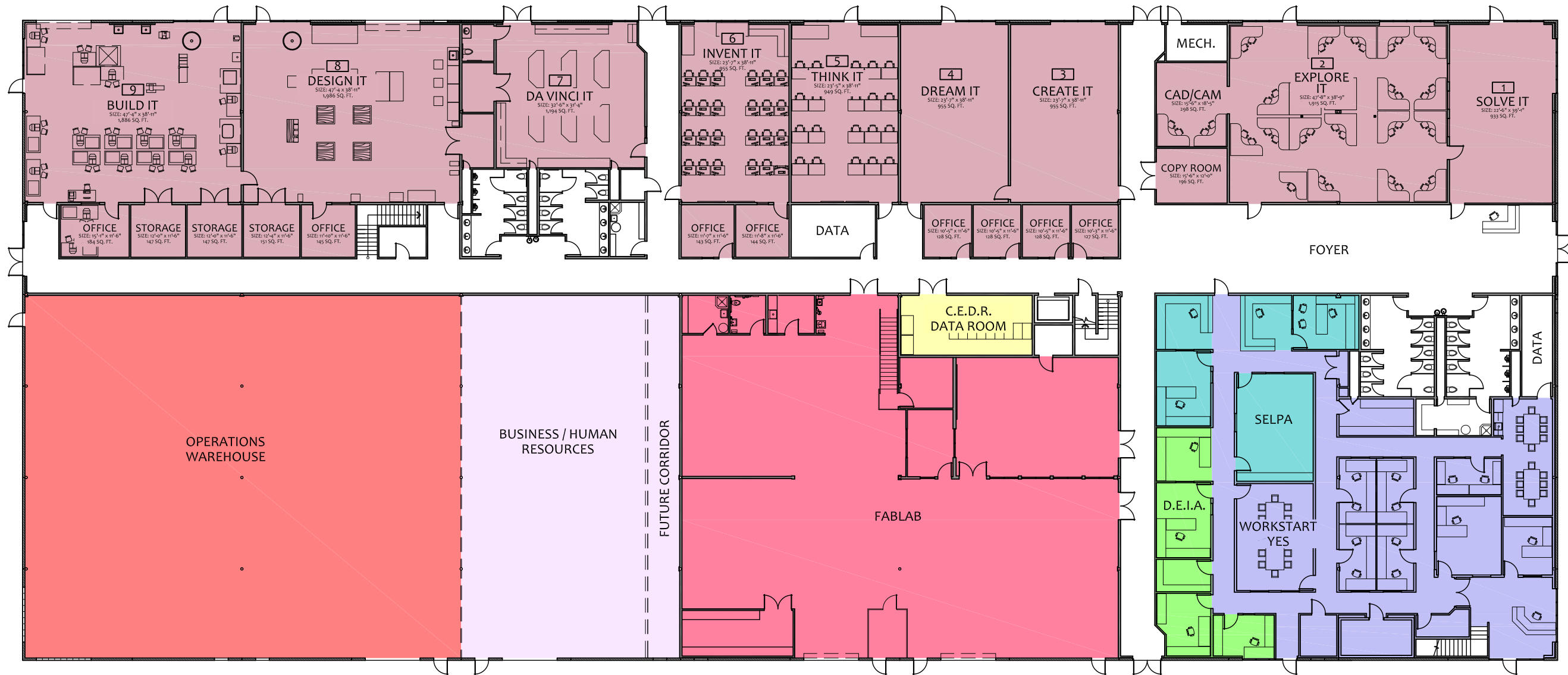
243 N. MAPLE AVENUE, STE B
 POST OFFICE BOX 477
 MANTECA, CALIFORNIA 95336
 P: 209.239.1229 / F: 209.239.4880

NELSON EDUCATION CENTER
 SAN JOAQUIN COUNTY OFFICE OF EDUCATION
 2922 TRANSWORLD DRIVE
 STOCKTON, CALIFORNIA

BUILDING CONTROL GUIDE

SCALE: 1" = 25'-0"
 DATE: 12 FEB 24

2922_2



243 N. MAPLE AVENUE, STE B
 POST OFFICE BOX 477
 MANTECA, CALIFORNIA 95336
 P: 209.239.1229 / F: 209.239.4880

CAREER TECHNICAL EDUCATION CENTER
 SAN JOAQUIN COUNTY OFFICE OF EDUCATION
 2911 TRANSWORLD DRIVE
 STOCKTON, CALIFORNIA

BUILDING CONTROL GUIDE

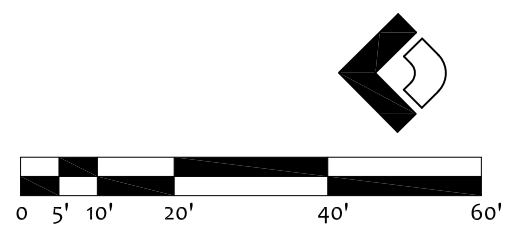
SCALE: 1" = 25'-0"
 DATE: 12 FEB 24

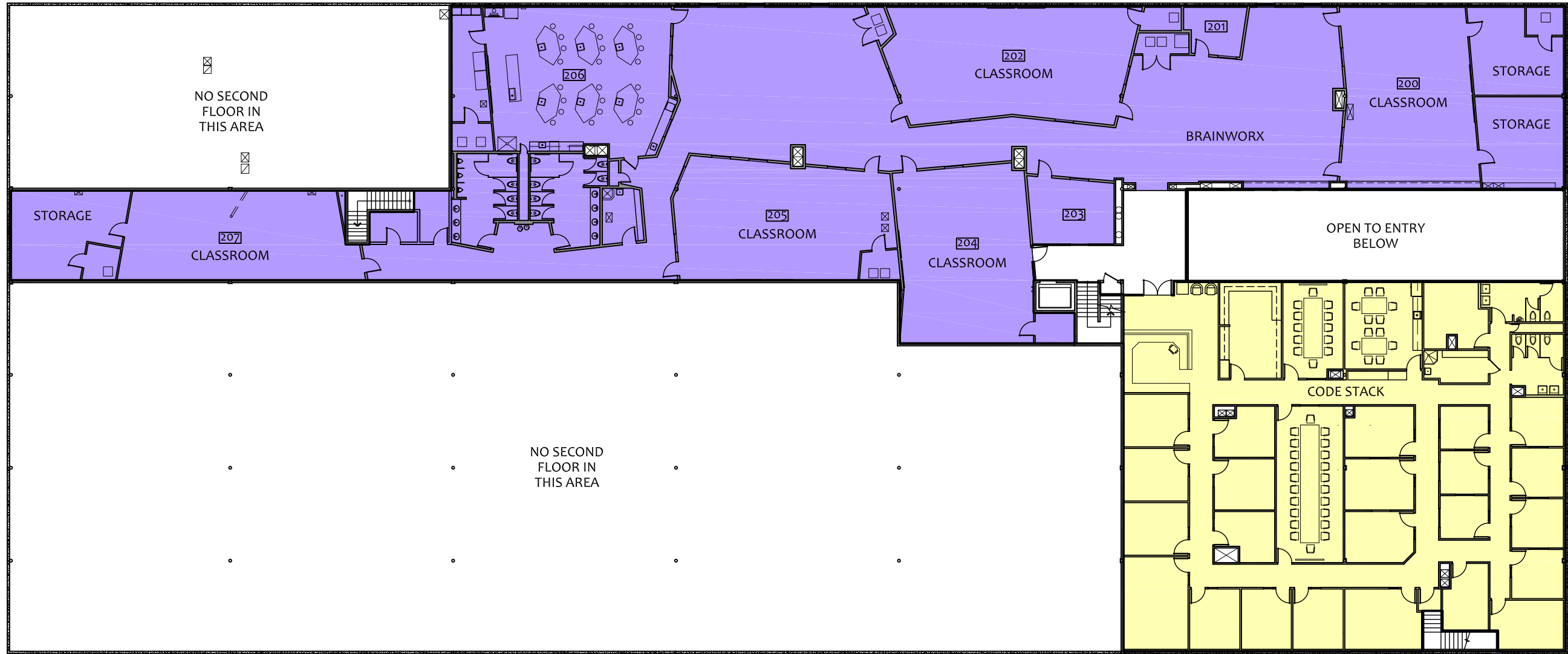
2911_1

PAGE: 05 of 17

CAREER TECHNICAL EDUCATION CENTER
FIRST FLOOR

LEGEND			
DEPARTMENT	USABLE AREA	ADD-ON FACTOR	NET AREA
VENTURE	13,772 SF	24.550%	17,153 SF
C.E.D.R.	398 SF	24.550%	496 SF
FABLAB	6,986 SF	24.550%	8,701 SF
BUSINESS / HUMAN RESOURCES	3,827 SF	0.000%	3,827 SF
SELPA	1,091 SF	24.550%	1,359 SF
WORKSTART YES	3,899 SF	24.550%	4,856 SF
D.E.I.A.	743 SF	24.550%	925 SF
WAREHOUSE	7,600 SF	0.000%	7,600 SF
COMMON AREAS	8,249 SF	N/A	N/A
TOTAL	46,565 SF		44,917 SF





243 N. MAPLE AVENUE, STE B
 POST OFFICE BOX 477
 MANTECA, CALIFORNIA 95336
 P: 209.239.1229 / F: 209.239.4880

CAREER TECHNICAL EDUCATION CENTER
 SAN JOAQUIN COUNTY OFFICE OF EDUCATION
 2911 TRANSWORLD DRIVE
 STOCKTON, CALIFORNIA

BUILDING CONTROL GUIDE

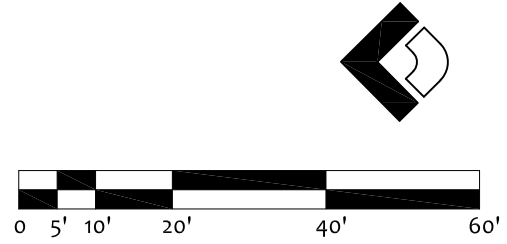
SCALE: 1" = 25'-0"
 DATE: 12 FEB 24

2911_2

PAGE: 06 of 17

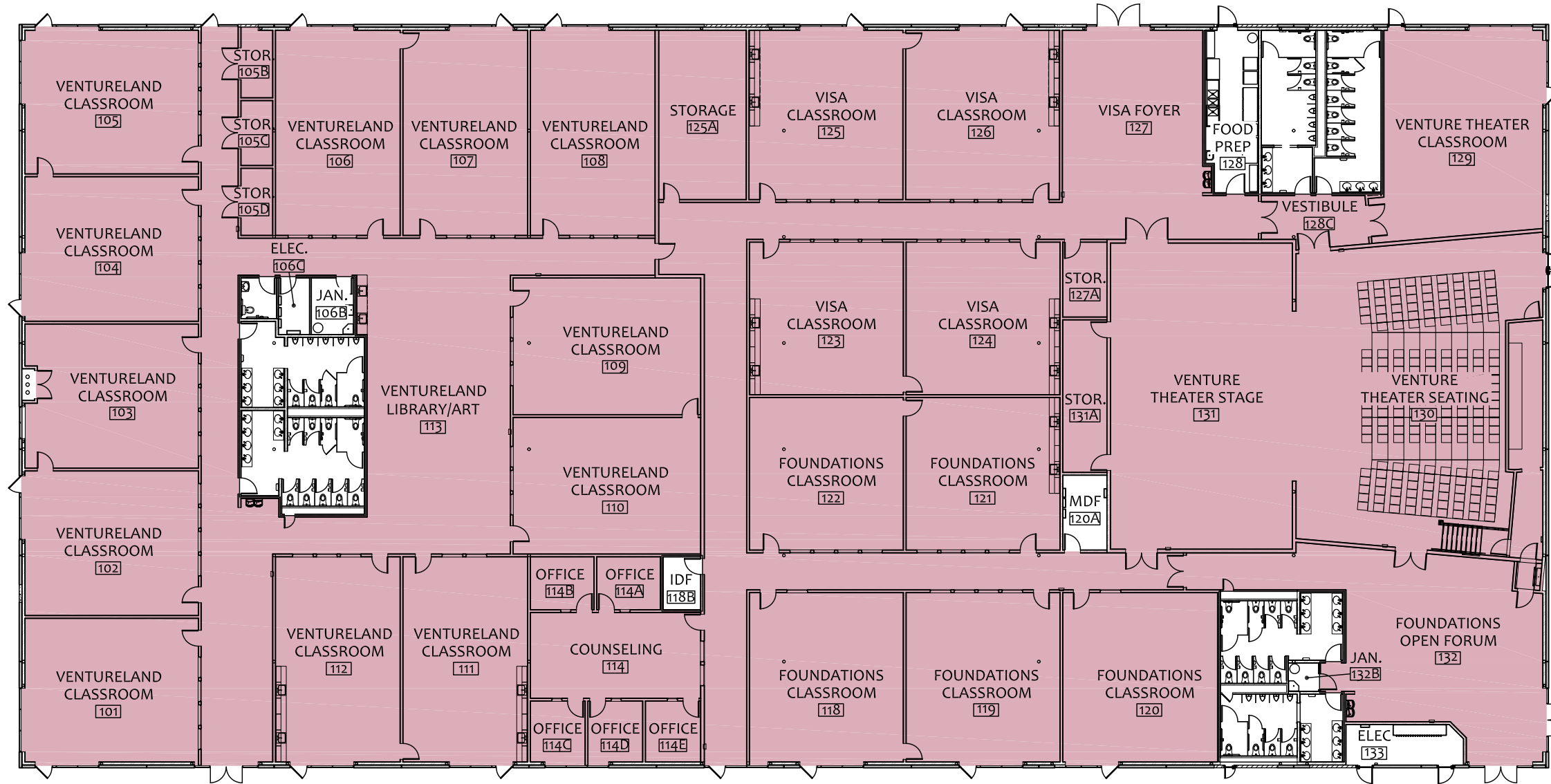
CAREER TECHNICAL EDUCATION CENTER
 SECOND FLOOR

LEGEND			
DEPARTMENT	USABLE AREA	ADD-ON FACTOR	NET AREA
BRAINWORX	14,233 SF	9.767%	15,623 SF
CODE STACK	7,359 SF	9.767%	8,078 SF
COMMON AREAS	461 SF	N/A	N/A
TOTAL	22,053 SF		23,701 SF





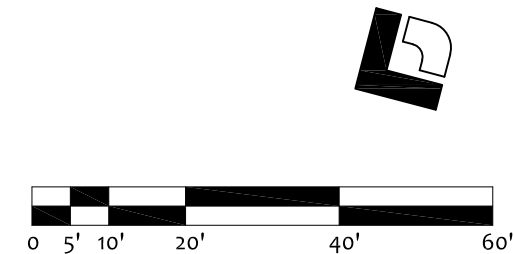
243 N. MAPLE AVENUE, STE B
 POST OFFICE BOX 477
 MANTECA, CALIFORNIA 95336
 P: 209.239.1229 / F: 209.239.4880



VENTURE ACADEMY FAMILY OF SCHOOLS
 SAN JOAQUIN COUNTY OFFICE OF EDUCATION
 2857 TRANSWORLD DRIVE
 STOCKTON, CALIFORNIA

VENTURE ACADEMY FAMILY OF SCHOOLS

LEGEND			
DEPARTMENT	USABLE AREA	ADD-ON FACTOR	NET AREA
VENTURE	36,447 SF	8.730%	39,629 SF
COMMON AREAS	3,182 SF	N/A	N/A
TOTAL	39,629 SF		39,629 SF



BUILDING CONTROL GUIDE

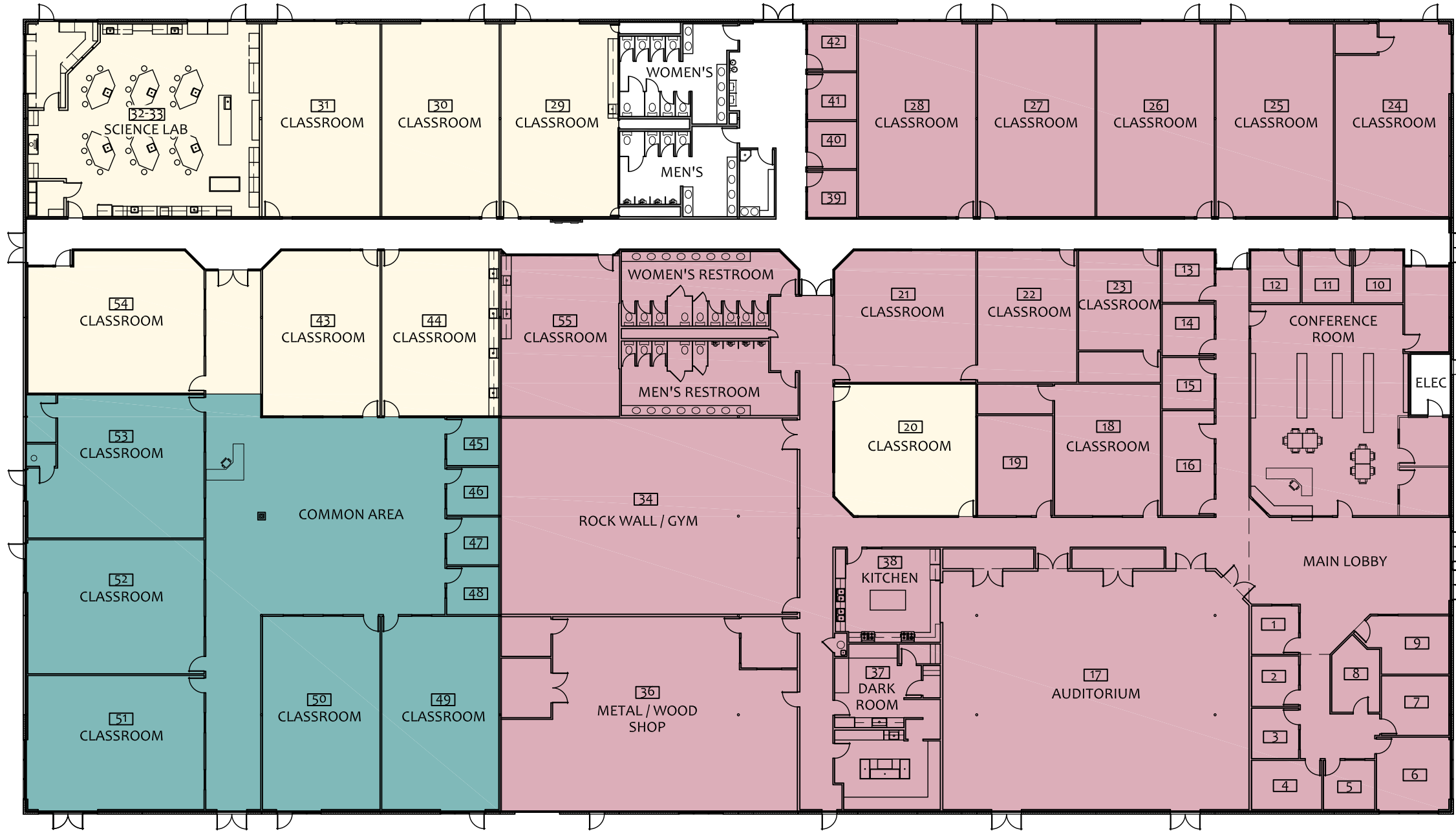
SCALE: 1" = 25'-0"

DATE: 12 FEB 24

2857

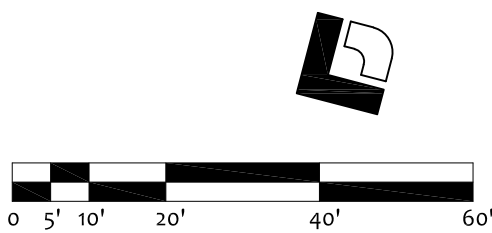


243 N. MAPLE AVENUE, STE B
 POST OFFICE BOX 477
 MANTECA, CALIFORNIA 95336
 P: 209.239.1229 / F: 209.239.4880



VENTURE ACADEMY FAMILY OF SCHOOLS

LEGEND			
DEPARTMENT	USABLE AREA	ADD-ON FACTOR	NET AREA
VENTURE	25,747 SF	8.842%	28,024 SF
DELTA VISTA	8,378 SF	8.842%	9,119 SF
FOUNDATIONS	7,810 SF	8.842%	8,501 SF
COMMON AREAS	3,708 SF	N/A	N/A
TOTAL	45,643 SF		45,643 SF



VENTURE ACADEMY FAMILY OF SCHOOLS
 SAN JOAQUIN COUNTY OFFICE OF EDUCATION
 2829 TRANSWORLD DRIVE
 STOCKTON, CALIFORNIA

BUILDING CONTROL GUIDE

SCALE: 1" = 25'-0"
 DATE: 12 FEB 24

2829



243 N. MAPLE AVENUE, STE B
 POST OFFICE BOX 477
 MANTECA, CALIFORNIA 95336
 P: 209.239.1229 / F: 209.239.4880



**TEACHERS COLLEGE
 OF SAN JOAQUIN**
 FIRST FLOOR

LEGEND			
DEPARTMENT	USABLE AREA	ADD-ON FACTOR	NET AREA
TEACHERS COLLEGE	46,416 SF	1.055%	46,906 SF
COMMON AREAS	418 SF	N/A	N/A
TOTAL	46,834 SF		46,906 SF



TEACHERS COLLEGE OF SAN JOAQUIN
 SAN JOAQUIN COUNTY OFFICE OF EDUCATION
 2721 TRANSWORLD DRIVE
 STOCKTON, CALIFORNIA

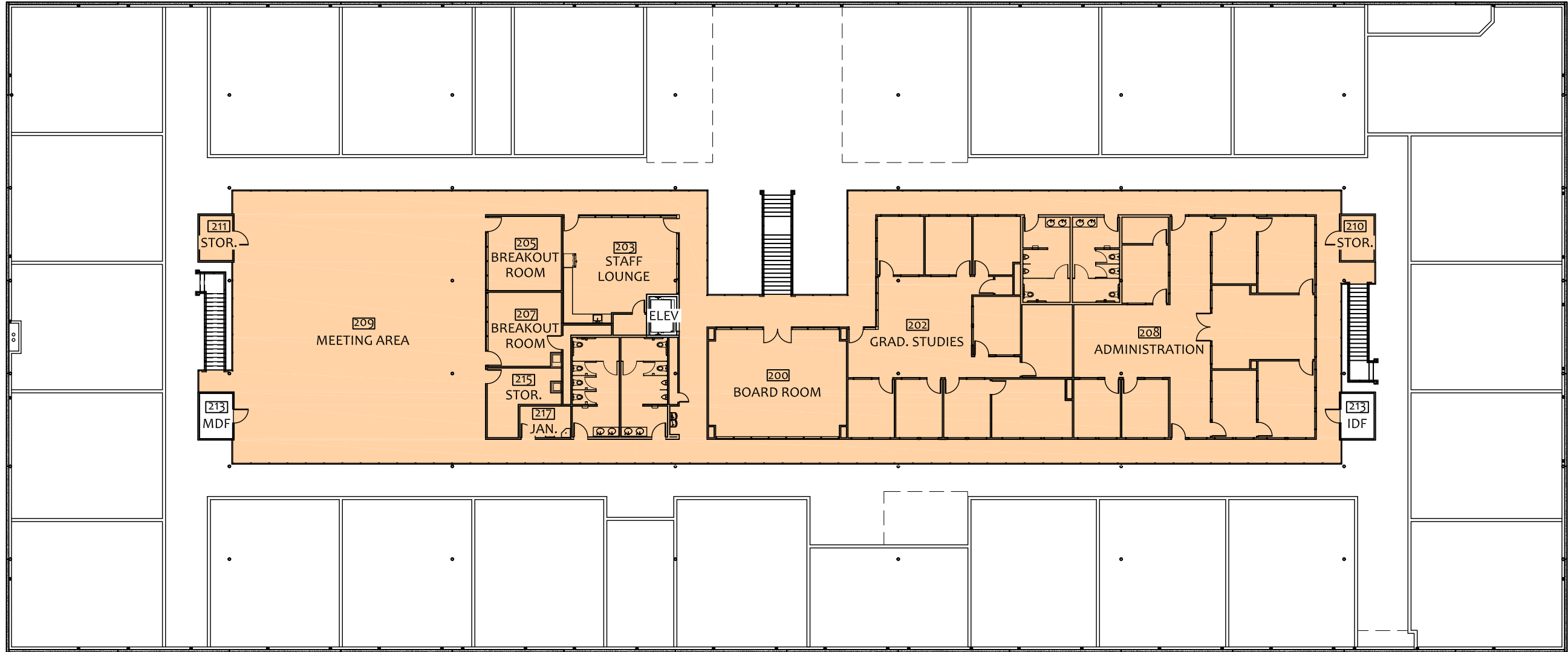
**BUILDING
 CONTROL
 GUIDE**

SCALE: 1" = 25'-0"
 DATE: 12 FEB 24

2721_1

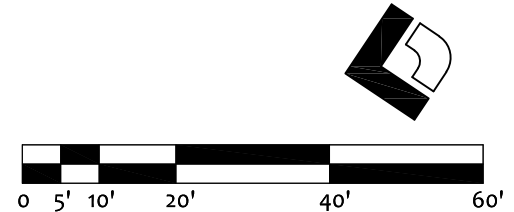


243 N. MAPLE AVENUE, STE B
 POST OFFICE BOX 477
 MANTECA, CALIFORNIA 95336
 P: 209.239.1229 / F: 209.239.4880



**TEACHERS COLLEGE
 OF SAN JOAQUIN**
 SECOND FLOOR

LEGEND			
DEPARTMENT	USABLE AREA	ADD-ON FACTOR	NET AREA
TEACHERS COLLEGE	13,603 SF	1.055%	13,747 SF
TOTAL	13,603 SF		13,747 SF

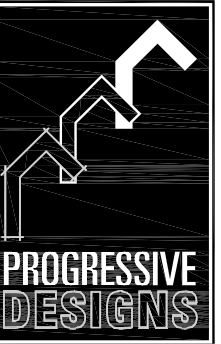


TEACHERS COLLEGE OF SAN JOAQUIN
 SAN JOAQUIN COUNTY OFFICE OF EDUCATION
 2721 TRANSWORLD DRIVE
 STOCKTON, CALIFORNIA

**BUILDING
 CONTROL
 GUIDE**

SCALE: 1" = 25'-0"
 DATE: 12 FEB 24

2721_2



243 N. MAPLE AVENUE, STE B
 POST OFFICE BOX 477
 MANTECA, CALIFORNIA 95336
 P: 209.239.1229 / F: 209.239.4880

WENTWORTH EDUCATION CENTER
 SAN JOAQUIN COUNTY OFFICE OF EDUCATION
 2707 TRANSWORLD DRIVE
 STOCKTON, CALIFORNIA

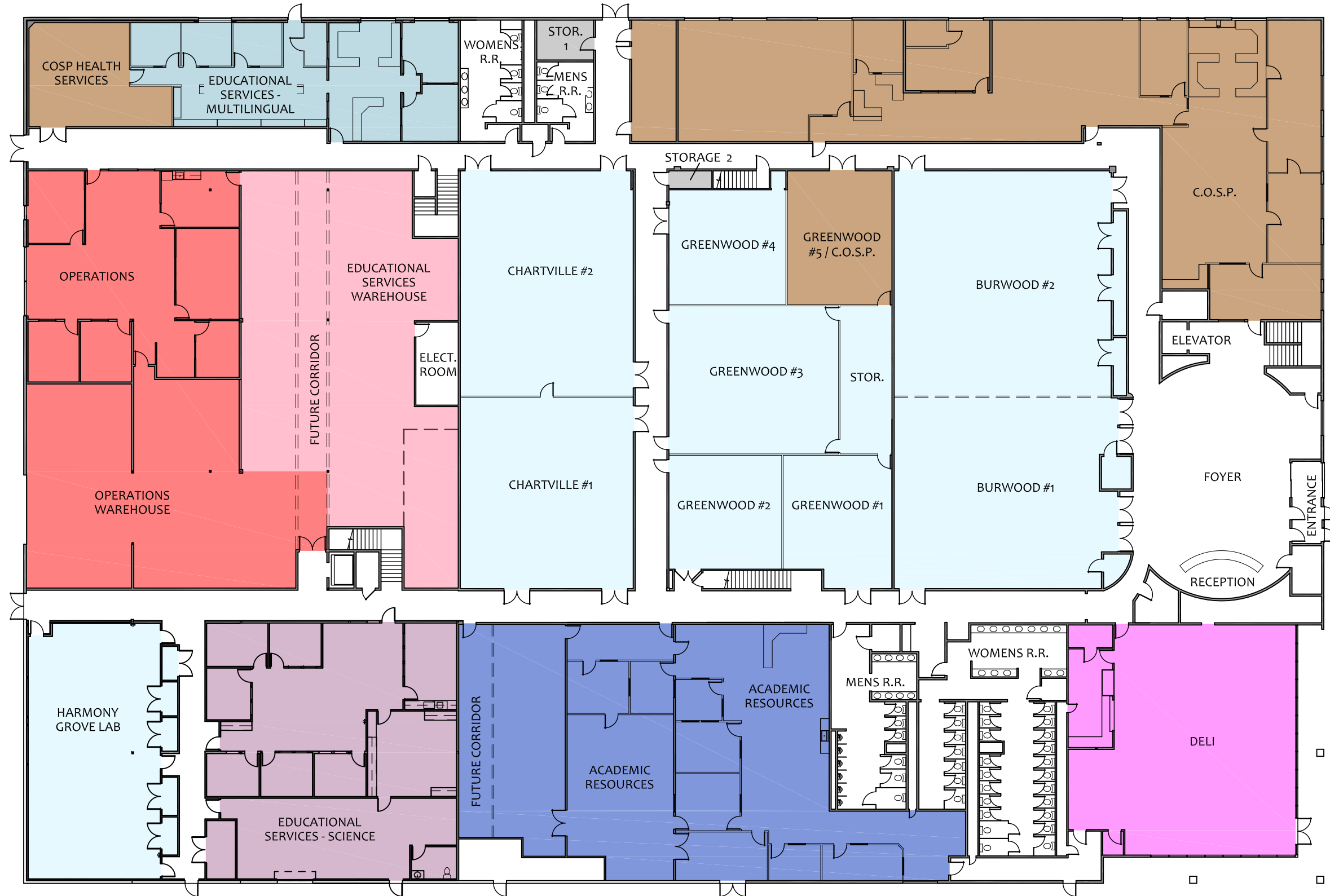
BUILDING CONTROL GUIDE

SCALE: 1" = 25'-0"

DATE: 12 FEB 24

2707_1

PAGE: 11 of 17



WENTWORTH EDUCATION CENTER
FIRST FLOOR

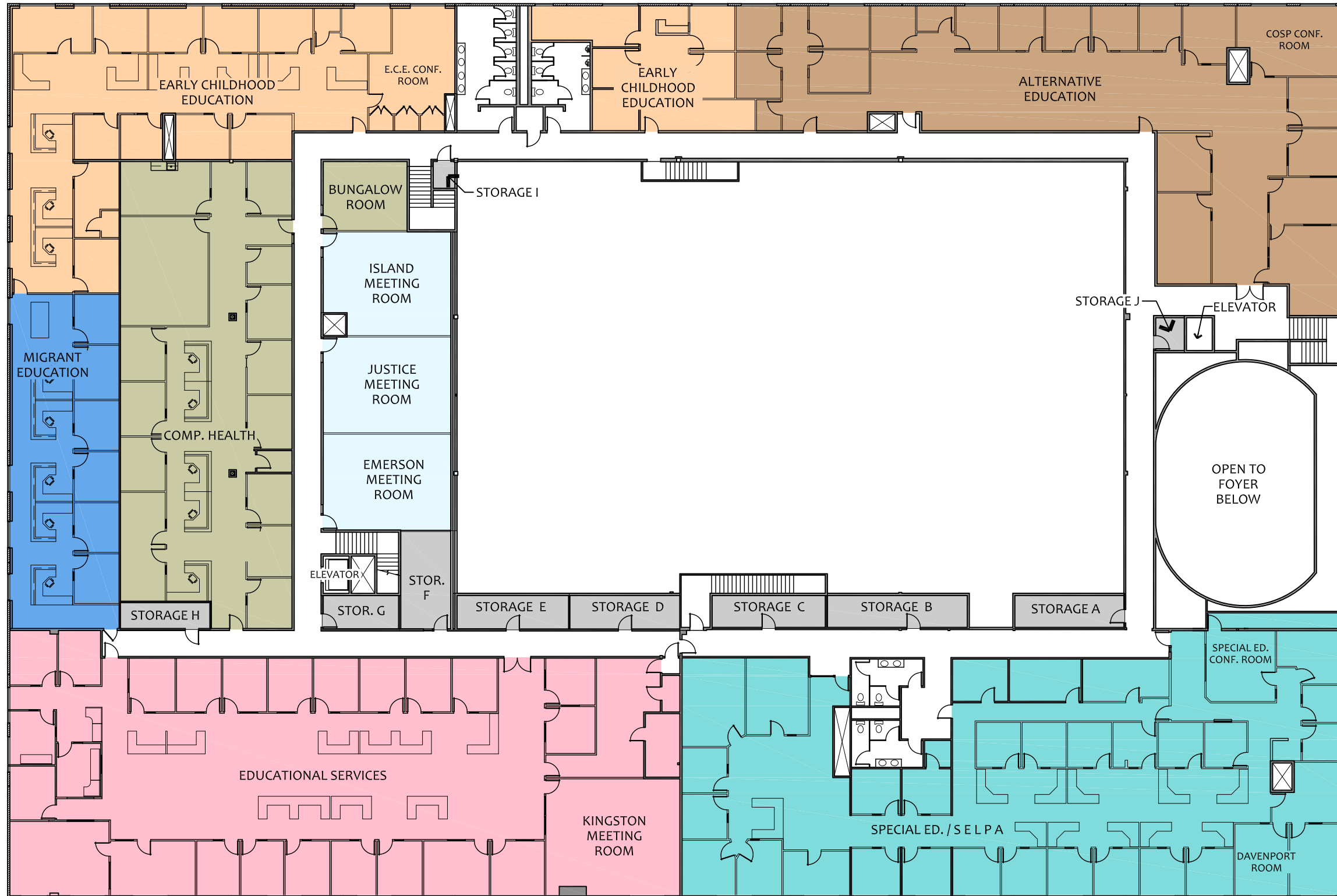


LEGEND								
DEPARTMENT	USABLE AREA	ADD-ON FACTOR	NET AREA	DEPARTMENT	USABLE AREA	ADD-ON FACTOR	NET AREA	
CONFERENCE ROOMS	15,077 SF	24.463%	18,765 SF	FOOD SERVICE	2,768 SF	24.463	3,445 SF	
EDUCATIONAL SERVICES	3,732 SF	24.463	4,645 SF	ACADEMIC RESOURCES	5,349 SF	24.463	6,658 SF	
EDUC. SERV. - MULTILINGUAL	1,893 SF	24.463	2,356 SF	C.O.S.P.	7,334 SF	24.463	9,128 SF	
EDUC. SERV. - SCIENCE	3,435 SF	24.463	4,275 SF	UNALLOCATED AREAS	173 SF	N/A	N/A	
OPERATIONS	5,262 SF	24.463	6,549 SF	COMMON AREAS	13,743 SF	N/A	N/A	
TOTAL					58,766SF		55,822 SF	



WENTWORTH EDUCATION CENTER

SECOND FLOOR



LEGEND								
DEPARTMENT	USABLE AREA	ADD-ON FACTOR	NET AREA	DEPARTMENT	USABLE AREA	ADD-ON FACTOR	NET AREA	
CONFERENCE ROOMS	1,987 SF	25.489%	2,493 SF	SPECIAL ED. / S E L P A	7,624 SF	25.489%	9,567 SF	
COMPREHENSIVE HEALTH	4,238 SF	25.489%	5,318 SF	EDUCATIONAL SERVICES	8,074 SF	25.489%	10,132 SF	
MIGRANT EDUCATION	1,837 SF	25.489%	2,305 SF	UNALLOCATED AREAS	1,675 SF	N/A	N/A	
EARLY CHILDHOOD ED.	4,919 SF	25.489%	6,173 SF	COMMON AREAS	5,882 SF	N/A	N/A	
C.O.S.P. STUDENT SERVICES	5,261 SF	25.489%	6,602 SF					
TOTAL					41,497 SF		42,591 SF	



243 N. MAPLE AVENUE, STE B
 POST OFFICE BOX 477
 MANTECA, CALIFORNIA 95336
 P: 209.239.1229 / F: 209.239.4880

WENTWORTH EDUCATION CENTER
 SAN JOAQUIN COUNTY OFFICE OF EDUCATION
 2707 TRANSWORLD DRIVE
 STOCKTON, CALIFORNIA

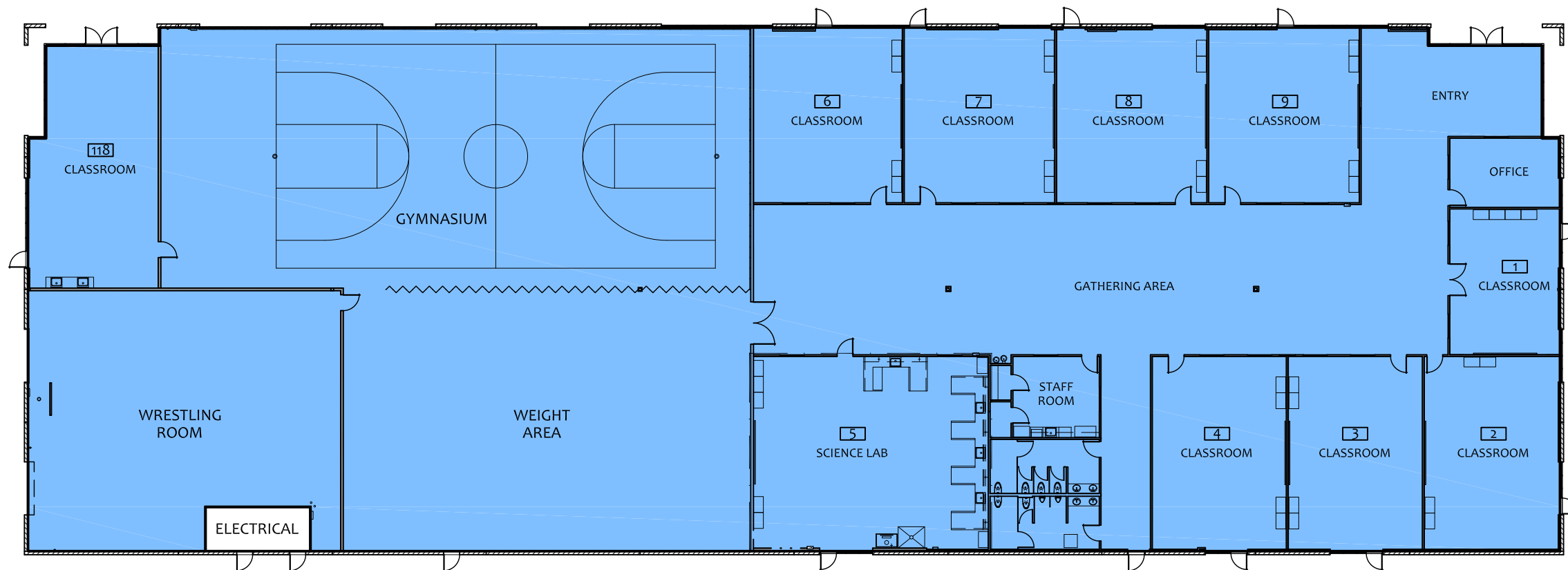
BUILDING CONTROL GUIDE

SCALE: 1" = 25'-0"

DATE: 12 FEB 24

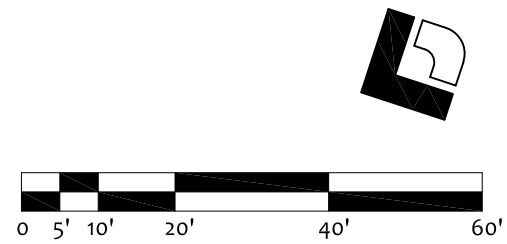
2707_2

PAGE: 12 of 17



**VENTURE ACADEMY
FAMILY OF SCHOOLS**

LEGEND			
DEPARTMENT	USABLE AREA	ADD-ON FACTOR	NET AREA
EXCEL SPORTS ACADEMY	28,028 SF	0.589%	28,193 SF
COMMON AREAS	165 SF	N/A	N/A
TOTAL	28,193 SF		28,193 SF



243 N. MAPLE AVENUE, STE B
POST OFFICE BOX 477
MANTECA, CALIFORNIA 95336
P: 209.239.1229 / F: 209.239.4880

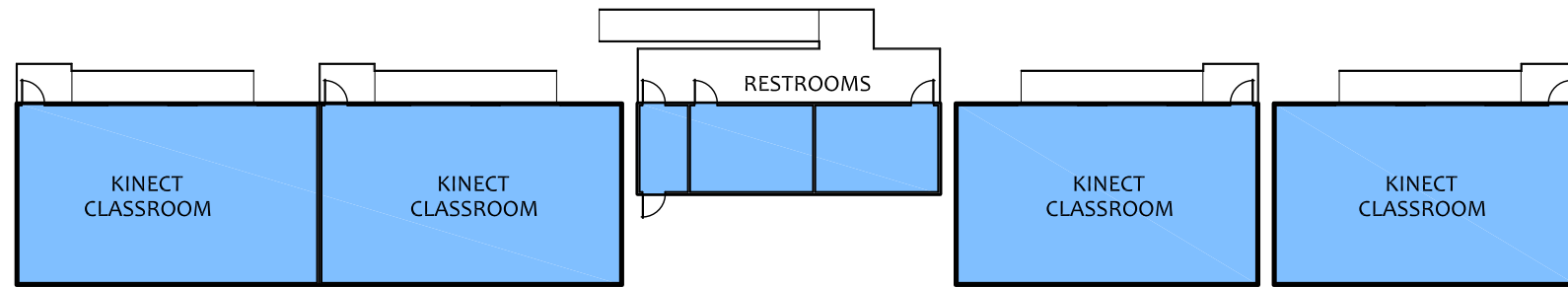
VENTURE ACADEMY FAMILY OF SCHOOLS
SAN JOAQUIN COUNTY OFFICE OF EDUCATION
2720 TRANSWORLD DRIVE
STOCKTON, CALIFORNIA

**BUILDING
CONTROL
GUIDE**

SCALE: 1" = 25'-0"

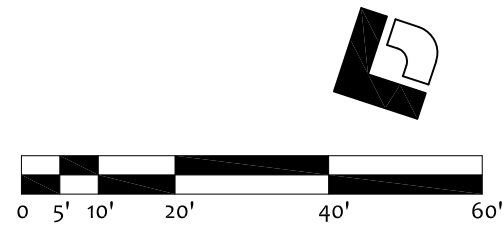
DATE: 12 FEB 24

2720



**VENTURE ACADEMY
 FAMILY OF SCHOOLS
 PORTABLES**

LEGEND			
DEPARTMENT	USABLE AREA	ADD-ON FACTOR	NET AREA
EXCEL SPORTS ACADEMY	4,320 SF	0.000%	4,320 SF
COMMON AREAS	0 SF	N/A	N/A
TOTAL	4,320 SF		4,320 SF



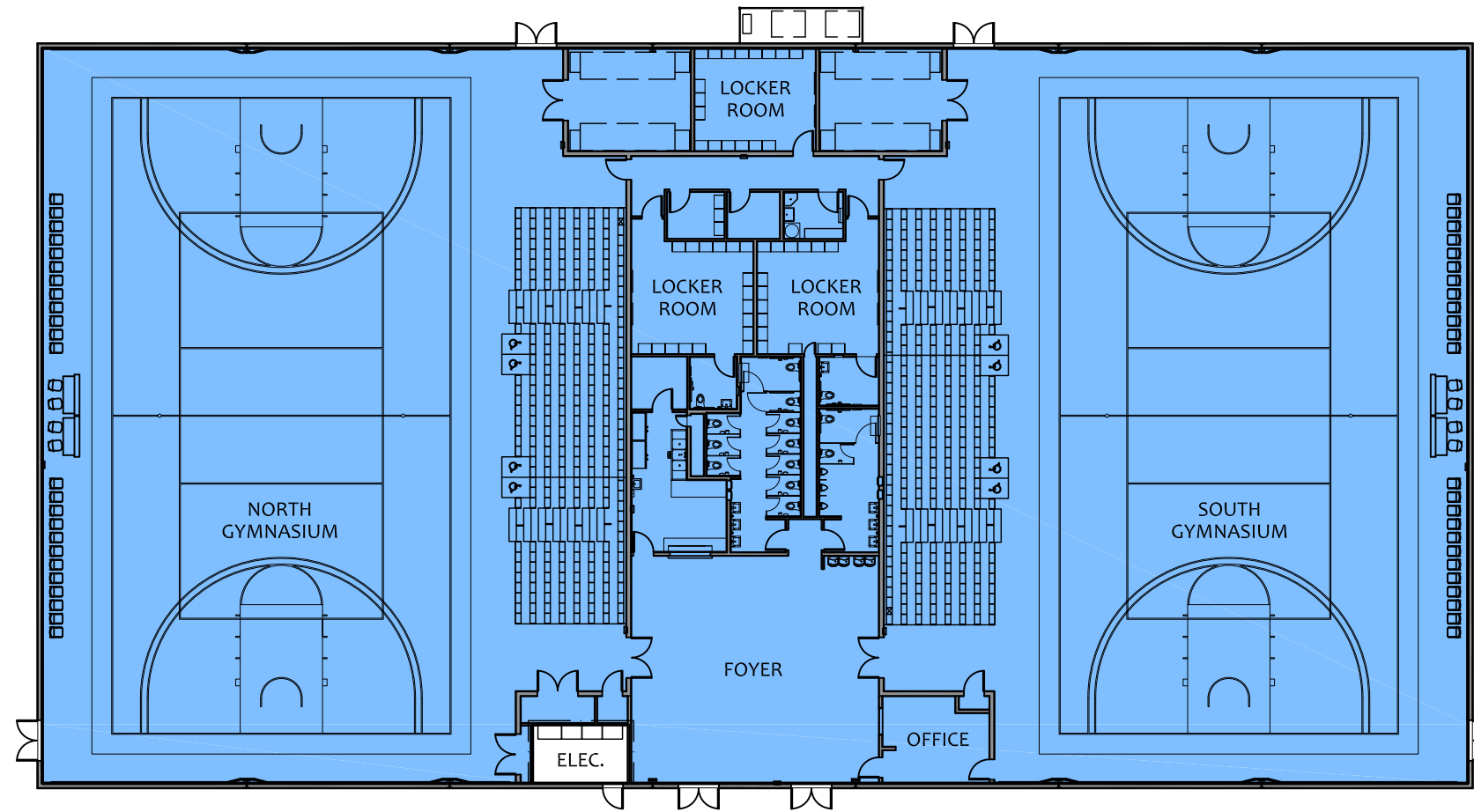
243 N. MAPLE AVENUE, STE B
 POST OFFICE BOX 477
 MANTECA, CALIFORNIA 95336
 P: 209.239.1229 / F: 209.239.4880

VENTURE ACADEMY FAMILY OF SCHOOLS PORTABLES
 SAN JOAQUIN COUNTY OFFICE OF EDUCATION
 2720 TRANSWORLD DRIVE
 STOCKTON, CALIFORNIA

BUILDING CONTROL GUIDE

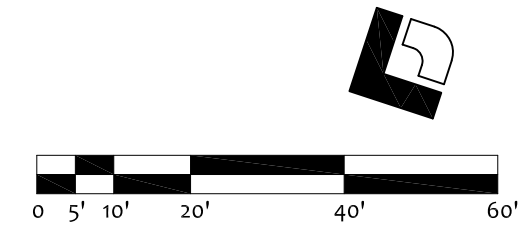
SCALE: 1" = 25'-0"
 DATE: 12 FEB 24

2720_P



GYMNASIUM

LEGEND			
DEPARTMENT	USABLE AREA	ADD-ON FACTOR	NET AREA
EXCEL GYMNASIUM	22,766 SF	0.553%	22,892 SF
COMMON AREAS	126 SF	N/A	N/A
TOTAL	22,892 SF		22,892 SF



243 N. MAPLE AVENUE, STE B
 POST OFFICE BOX 477
 MANTECA, CALIFORNIA 95336
 P: 209.239.1229 / F: 209.239.4880

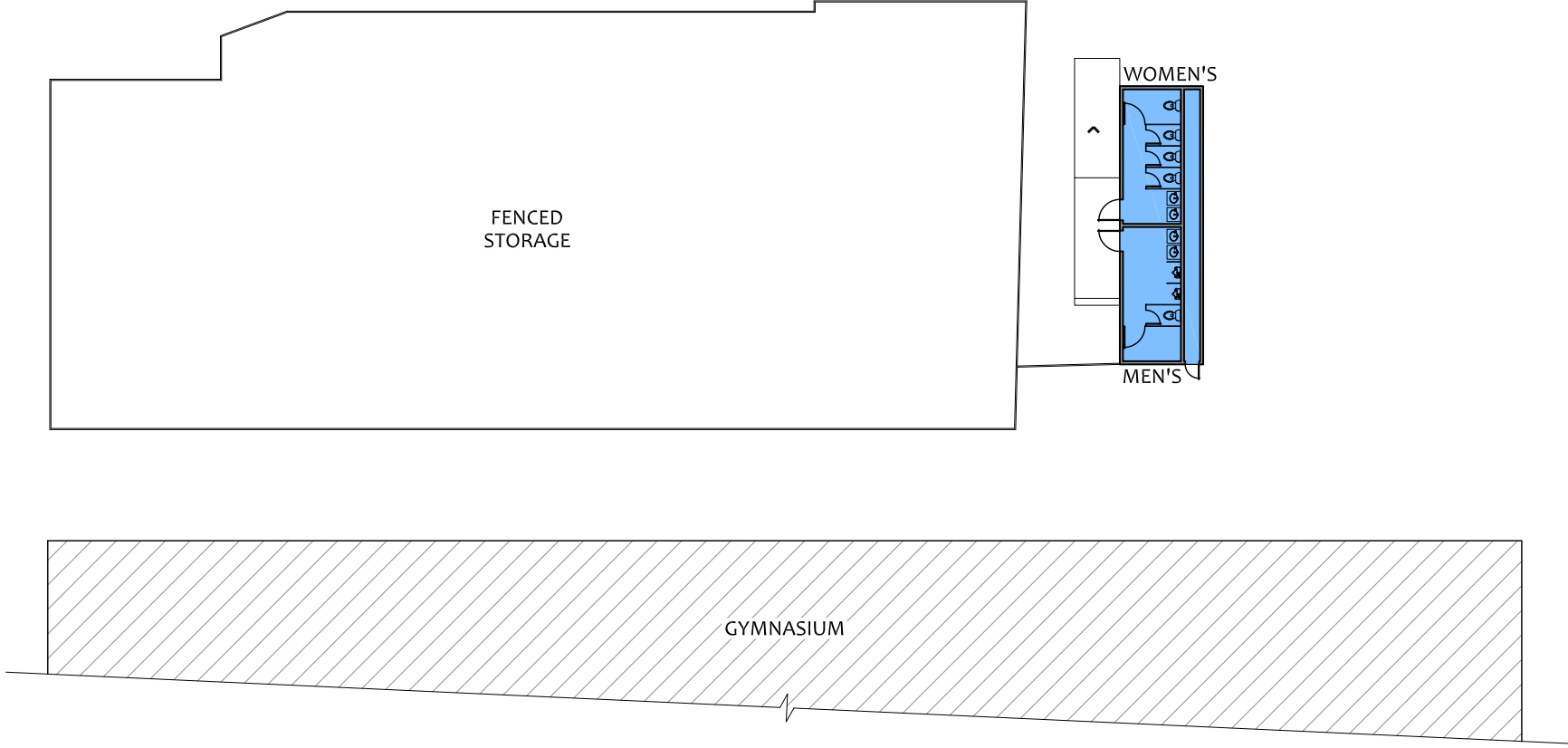
GYMNASIUM
 SAN JOAQUIN COUNTY OFFICE OF EDUCATION
 2814 TRANSWORLD DRIVE
 STOCKTON, CALIFORNIA

BUILDING CONTROL GUIDE

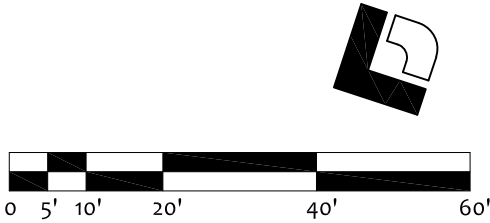
SCALE: 1" = 25'-0"
 DATE: 12 FEB 24

2814

**VENTURE ACADEMY
 FAMILY OF SCHOOLS
 PORTABLES**



LEGEND			
DEPARTMENT	USABLE AREA	ADD-ON FACTOR	NET AREA
VENTURE INTEGRATED SUBJECT ACADEMY (VISA)	480 SF	0.000%	480 SF
COMMON AREAS	0 SF	N/A	N/A
TOTAL	480 SF		480 SF



243 N. MAPLE AVENUE, STE B
 POST OFFICE BOX 477
 MANTECA, CALIFORNIA 95336
 P: 209.239.1229 / F: 209.239.4880

VENTURE ACADEMY FAMILY OF SCHOOLS PORTABLES
 SAN JOAQUIN COUNTY OFFICE OF EDUCATION
 2814 TRANSWORLD DRIVE
 STOCKTON, CALIFORNIA

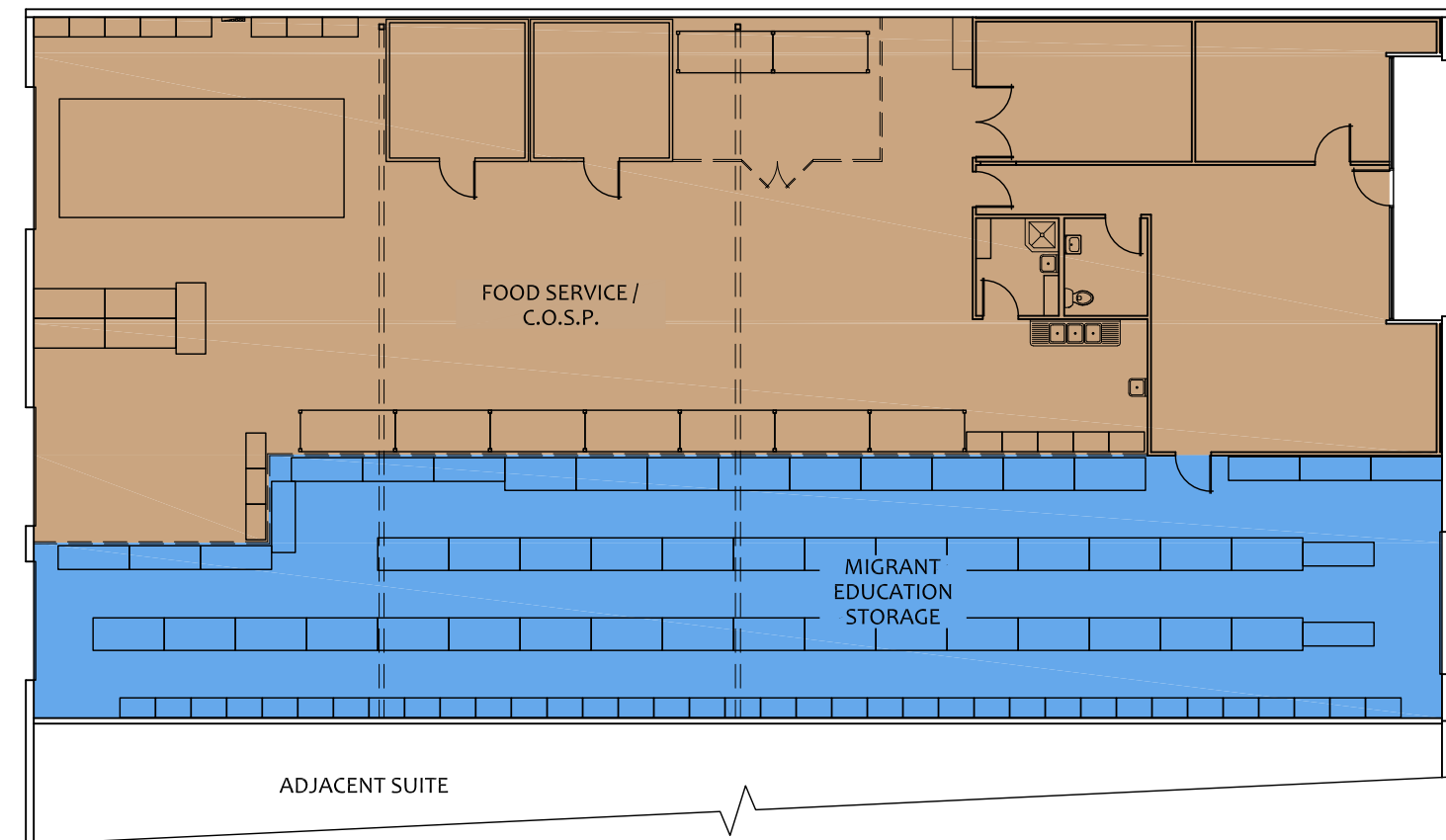
BUILDING CONTROL GUIDE

SCALE: 1" = 25'-0"
 DATE: 12 FEB 24

2814_P

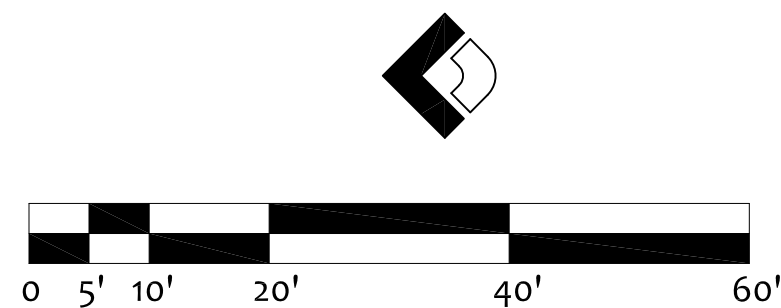


243 N. MAPLE AVENUE, STE B
 POST OFFICE BOX 477
 MANTECA, CALIFORNIA 95336
 P: 209.239.1229 / F: 209.239.4880



LYCOMING WAREHOUSE

LEGEND			
DEPARTMENT	USABLE AREA	ADD-ON FACTOR	NET AREA
C.O.S.P.	4,427 SF	N/A	N/A
MIGRANT EDUCATION	2,489 SF	N/A	N/A
TOTAL	6,916 SF		6,916 SF



LYCOMING WAREHOUSE
 SAN JOAQUIN COUNTY OFFICE OF EDUCATION
 2619 LYCOMING STREET
 STOCKTON, CALIFORNIA

BUILDING CONTROL GUIDE

SCALE: 1/16" = 1'-0"

DATE: 12 FEB 24

LYC